

# MOTD

The Newsletter of the National OS9 Users Group

Jan/Feb 1988

## ELECTIONS, OTHER CHANGES, ABOUND

By David L. Kaleita (Our New President)

Okay, let's try this one more time...

The last time most of you heard from the OS9 Users Group was in the May/June issue of the MOTD. At that time, I tried to paint as bright a picture as possible in my explanation of what had happened in the six months previous to that. If you recall, the May/June issue contained the first official announcements of Bill Turner's Presidency of the OS9 Users Group, and of the UG's new mailing address in Tampa. So what, you ask has happened since then? A lot.

### Bill Turner Resigns

First of all, I am sad to announce that, due to a fairly complex set of circumstances, Bill Turner had found it necessary to resign from his post as President. Bill has not dropped totally out of the picture, however, and continues to be involved in the operations of the Group. This occurrence, however, left me to fill the position of President until the UG could hold official elections. I immediately appointed Pete Lyall, most well known for his work on CompuServe and other electronic bulletin board services, to fill the position of Vice President I vacated. Per our bylaws, one of the duties of each new UG President is to appoint individuals to fill the positions of Librarian, Editor and Director-at-large. Luckily, Carl Kreider and Dale Puckett were still available to fill the positions of Librarian and Director-at-large respectively. I appointed Bill Brady, who is most well known as the author of the Color Computer communications program "Wiz", to be the MOTD Editor during my term as President. So why hasn't the MOTD been published in such a long time? The answer is quite simple: MONEY. Because of the terrific administrative problems of 1986, the OS9 Users Group had accrued debts in excess of \$10,000, most of which was owed to FalSoft for publication of the MOTD during that time. A repayment plan was arranged with FalSoft that would continue to let us publish the MOTD under the condition that we would pay for two issues (the current one and one of the past 1986 issues) in advance for each new issue we wished to publish. Unfortunately, without the

MOTD publishing, no one was getting the word that the UG was still operating, and membership renewals and disk orders stopped coming in. Obviously, this meant that the UG had no income and could therefore not afford to print. It was truly a "chicken and egg" situation.

### Renewals Due

According to our records, about HALF of all UG members are now due for membership renewal. If even half of THOSE renew at this time, the UG could be in fine financial shape for some time to come. Until then, however, we have found it necessary to change the format of the MOTD to this smaller size and mail it direct to you instead of publishing through FalSoft, as we had done for the last number of issues. This is therefore a rather desperate plea for all expired members to renew immediately. If you are unsure if it is time for you do renew, please take a look at the mailing label on this issue. If the label is marked "LAST COPY", or "EXPIRED" or anything like that, please run, don't walk, get your check book or credit card, and drop your membership renewal in the mail to us right away. If a significant number of people join or renew within the next few weeks, there is a very good likelihood that MOTD publishing will be able to get back on at least a bimonthly schedule, effective immediately.

### Elections

Besides getting the MOTD on a regular publication schedule again, one of the most important things that I feel needs to be done is to finally hold official elections for UG officers. In my article in the May/June issue of the MOTD, I asked for nominations for anyone willing to run for any UG elected office. We got absolutely no response. On bended knee, I convinced Pete Lyall and Kevin Darling to run for their currently held positions of Vice President and Secretary respectively, but have been unable to find anyone whatsoever to run for the position of President. Although I originally had no intention or desire to hold this position, I have agreed to run for this position at this time so that we can hold the elections without delay. Due to the lack of

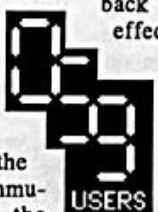
### TABLE OF CONTENTS

Presidents Column.....	1
From the Editor.....	2
UG Electronic Addresses.....	2
UG Library.....	3
Forms.....	5
Multi-View; Preview.....	6
Superboard Review.....	9
Other News.....	9
Bringing OSK up on the ST..	10
Membership Info.....	10
Ballot.....	11
CC3IO Patch.....	12

volunteers to run for an office, you'll notice that most or all candidates are running unopposed. As a last chance for those of you who simply forgot, we have included a blank space next to each office for write-in candidates. So if you are aware of someone who's name is not preprinted on the ballot who is willing to accept one of these positions, write that person's name next to the office in question and place your vote accordingly. We'll announce the results of this election in the next issue of the MOTD.

### We've Been Busy

Even with the absence of the MOTD for the past months, the UG officers have indeed been quite busy. Many plans are currently underway and, if we can count on a significant number of people to renew their UG memberships, we will hopefully be able to get the UG back on its feet in the very near future. One of the biggest complaints we've been receiving from people is that they haven't been kept aware of what's been going on. The fact is that when finances are tight, communication is difficult. Obviously, when the MOTD is publishing, things are doing pretty well. But in the absence of this type of communication from the UG, there are still ways to get some answers. First, you can always write us a letter. But for the fastest response, you should make an attempt to contact us on one of the electronic mail services, such as those on CompuServe or Delphi, using your computer and modem. Even during the worst



of the UG's blight in the last 12 months, most of the UG officers had been logging on regularly to check for messages, and responding to them immediately. Although CompuServe, GENie, and Delphi are not free, the cost to use them is relatively low and directly related to how often they are used. Since they only cost money if you use them, I highly recommend that everyone who owns a modem should sign up for ALL THREE services. Besides being able to get in touch with the UG officers, you'll be able to talk to many more OS9 users such as yourself. Below you'll find a list of CompuServe, Delphi and GENie addresses for the officers of the OS9 Users Group. Drop me a message when you get signed on!

### A Message from the Editor

Many of us have lost faith in our users group. I know I did. There were many reasons for this, I won't go into them here, but I will say that I think things have changed. I am not talking about within the UG, although there have been changes here too. No, I am talking about the world of computers in general.

### In fact, I am downright excited!

We have a new "take charge" President, and an energetic crew! We all know about the incredible productivity of Kevin and Pete, the masterful utilities that Carl gives us, but how many of us know about the terrific job that George Dorner did when he was past treasurer? Well, George is back! Of course we still have our "patrone", Dale Puckett, with us as well.

### How can we loose?

OS9 is quickly coming out from the "under-ground". We have many new users. OS9/68000 is now available for the Atari ST. OS9 Level 2, especially on the Color Computer, is just about the most effective, mature, operating system there is in the personal computing world. The MS-DOS types still think we "fake" our device windows!

We have new books from Kevin, Dale & Peter Dibble in national circulation, and more to come.

We have great new s/w from the "biggies" such as EPYX..Flight Simulator II.. and from others like Greg Zumwalt's Phantomgraph.. and plenty more to come!

## Electronic Mail Addresses for Users Group Officers

	CompuServe	Delphi	GENie
David L. Kaleita President	70150,521	OS9UGPRES	
Pete Lyall Vice President	76703,4230	OS9UGVP	
Kevin Darling Secretary	76703,4227	KDARLING	
Carl Kreider Librarian	71076,76	OS9UGLIB	
Bill Brady Editor	70126,267	OS9UGED	B.Brady

To sign up, call the service(s) of your choice at the following phone #s:

CompuServe: 1-800-848-8990 (ask for an "IntroPak") Delphi: 1-800-544-4005 GENie: 1-800-638-9636

If need to make a choice, the following table is provided for comparison:

rate	300	1200	2400	sign-UP*	bill@
CIS	\$6.50	\$12.75	\$12.75	\$45.90	1 minute
Delphi	\$7.20	\$7.20	\$ ---	\$46.90	2 minute
GENie	\$5.00	\$5.00	\$12.50	\$18.00	1 second

\*including manual

There are other considerations when choosing a service. CIS has the same rates 24 hrs, which is good if you need access during the day. Delphi & GENie have the same rate for 300 & 1200 baud. Delphi offers free sign up to Rainbow subscribers. GENie has the lowest rates, have no "minimum" session, and, since they have one of the largest networks, you are more likely to be able to access them with a local call.

Microware deserves a bow or two for their actions in the TLM Systems fold on the Atari ST port of OSK. As many of you know, MW stepped in and "picked up the pieces", and rescued many stranded users. What many of you may not realize, is that this has resulted in MW itself growing, they are now "out of the closet" as well! For the first time in a long time, they are selling operating systems directly to the public, (heaven help them), rather than via an OEM like Tandy. Examples of the change are their new support section on CIS, (go MSC), and their new S/W source book.

### We also have a virtual avalanche of new and exciting hardware in the OS9 world!

The new Mega ST's are almost here, the new 520STfm is quite a bargain, we may see a port of OSK for the Mac II, and maybe even one for the '386! CoCo users are in add-on heaven, you can now plug in IBM keyboards, IBM hard disks, run multiple serial ports... the list keeps growing!

And our "mainframes", the shoebox powerhouses built by Frank Hogg, Hazelwood, GIMIX, and others,.... the 68020

machines, are getting faster, more powerful, and cheaper.

### How many of you use programs written by Pete, Kevin, or Carl?

I'll bet you use more than one each time you run OS9. Now these guys are on the hot seat, help them, pay them back just a little. Make the job easier for them, you've seen what they have done for you in the past, give them a chance and see what you SEE in the future!

Ah yes, I did produce this newsletter on the Mac, the page layout program I used is Ready Set Go! 4. Some think this is somehow dis-loyal to OS9, but the way I look at it is that the Mac is just a workstation attached to my CoCo. It is the CoCo's Baby brother, since it is the next generation 6809, (68000), and someday it may learn how to run OS9!

The Multi-View screens in Kevins Article are real, imported to the Mac via GIF, and plugged in to the MOTD with only minor editing.

-Bill Brady



## OS-9 USERS GROUP LIBRARY - 12/03/87

VOL	TITLE	DISK	CODE
28	68K Utilities	(disk #1)	1
50	68K Utilities	(disk #2)	1
51	68K Utilities	(disk #3)	1
53	68K Utilities	(disk #4)	1
7	Adventure Game (object)		3
6	Adventure Game (source)		4
17	Basic09 Programmer's Tool Kit		1
26	C Language Math Library	(09 only)	3
9	C Programmer's Tool Kit		3
42	Coco Graphics	(disk #1)	1
45	Coco Graphics	(disk #2)	2
15	Communication	(disk #1)	1
37	Communication (09&00 Kermit)	(disk #2)	2
39	Communication (Freeware)	(disk #3)	4
44	Communication (Smod8)	(disk #4)	1
56	Data Base Management (SDB LII)		4
14	File Maintenance	(disk #1)	1
21	File maintenance	(disk #2)	1
29	File Maintenance	(disk #3)	1
54	File Maintenance	(disk #4)	1
5	File Processing Utils	(disk #1)	1
13	File Processing Utils	(disk #2)	1
23	File Processing Utils	(disk #3)	1
30	File Processing Utils	(disk #4)	1
24	General Interest	(disk #2)	1
36	General Interest	(disk #3)	1
8	General Interest (demo, games, finance)		1
16	Hardware Customizations	(disk #1)	1
31	Hardware Customizations	(disk #2)	1
32	Hardware Customizations	(disk #3)	1
34	Hardware Customizations	(disk #4)	1
20	Languages 1: XLisp (object)		1
19	Languages 1: XLisp (source)		4
10	Math & Electronics		1
52	Math & Electronics	(disk #2)	1
0	New Member Intro		3
4	Programming Utilities		1
12	Programming Utilities	(disk #2)	1
22	Programming Utilities	(disk #3)	1
38	Programming Utilities	(disk #4)	1
41	Programming Utilities	(disk #5)	1
1	Spelling Check (New Ver; 09 & 00)		4
2	Spelling Dictionary (102k words, 09&00)		5
18	System Utilities	(disk #1)	1
33	System Utilities	(disk #2)	1
35	System Utilities	(disk #3)	1
40	System Utilities	(disk #4)	1
43	System Utilities	(disk #5)	1
46	Text Proccessing Utils (Sled)	(disk #1)	2
47	Text Proccessing Utils (68K Roff)	(disk #2)	4
49	Text ProcUtils (MicroEMACS)	(disk #3)	5
55	Text Proccessing Utils (QED for L2)	(disk #4)	4
3	Word Processing Utils	(disk #1)	1
11	Word Processing Utils	(disk #2)	1
25	Word Processing Utils	(disk #3)	1

## NOTES:

1) A complete "format consists of a TYPE plus a CODE, for example, format B1 is CoCo 35t ss dd.

	Type "A" Std. OS-9 : (5.25")	Type "B" CoCo OS-9 : (5.25")	Type "C" Atari OS-9 : (3.5")
Code			
1	35 t ss sd	35 t ss dd	80 t ss dd
2	35 t ds sd	35 t ss dd	80 t ss dd
4	40 t ds sd	40 t ss dd	80 t ss dd
5	40 t ds dd	40 t ds dd	80 t ss dd
6	80 t ds dd	80 t ds dd	80 t ds dd

2) All of the above volumes are available in Microware standard, Atari ST 3.5", and TRS-80 Color Computer (dd, 18 sectors/track, etc.) formats. Specify "TYPE B" when ordering if running a Color Computer; specify "TYPE C" if running OS-9 on an Atari ST computer. Please remember that some volumes of the Library will not fit on all formats of disk. If you do not specify the format you desire, you will be shipped either Microware standard 5.25" OS-9 format (i.e., "TYPE A"), or the format we have on file for you (as specified by you on your original membership/renewal application).

3) Send orders to the main UG address. Orders not marked on the exterior of the envelope "DISK ORDER" will be delayed an additional 4 to 6 weeks. DO NOT SEND ORDERS OR INQUIRES TO "LIBRARIAN".

4) The ENTIRE OS-9 UG Library is presently available in a special set of disks in UG format "A6" ONLY. Please note that this set contains all software that is presently contained in the UG Library EXCEPT the spelling dictionary, which is ONLY available on the individual Volume #2 library disk. This archive set is presently unavailable in Color Computer format.

To order any of the above individual volumes from the OS-9 Users Group, send \$6 for each 5.25" disk and \$8 for each 3.5" disk to the main address of the OS-9 Users Group.

Payment for disk orders may be made by check, Master Card or Visa ONLY. Please remember to include your complete mailing address, telephone number(s), a description of the disk format you want and, of course, your payment.

**OS9 Users Group**  
Suite R-237  
1715 East Fowler Ave.  
Tampa FL 33612

Orders will be accepted from MEMBERS ONLY!

**OS-9 USERS GROUP SOFTWARE LIBRARY ORDER**  
 (Members of the OS-9 Users Group ONLY)

 PLEASE ALLOW 6 WEEKS BEFORE  
 INQUIRING ABOUT YOUR ORDER

FROM...

Name:
Address:
City:
State, Zip:
Telephone Number(s):

		FORMAT		PRICE	
Qty	Volume #	Type	Code**	Each**	Total

ARCHIVE SET (format A6 only) :

ARCHIVE	A	6	\$100
---------	---	---	-------

TOTAL

 Note: the Archive Set is not Color Computer  
 Compatible

 \*\* Note: Information indicated by a "\*" above  
 should be taken from the current UG Library  
 Volumes listing, as reproduced in the  
 MOTD

 Please write us if you separately need any of  
 the above disks in any format other than the  
 ones we currently offer (such as 8" disks),  
 we may be able to put you in touch with a  
 UG member who will do a conversion for you

Check Number: \_\_\_\_\_

Credit Card Number: \_\_\_\_\_ exp date: \_\_\_\_\_

Is this Master Card? ☐ or Visa? ☐

Signature: \_\_\_\_\_

Mail To: The OS9 Users Group with

**ATTN: DISK ORDER**  
 ON ENVELOPE

**APPLICATION FOR MEMBERSHIP IN THE OS9  
 USERS GROUP**
FOR: CORPORATE ☐ INDIVIDUAL ☐NEW ☐ RENEWAL ☐

FROM...

Name:
Address:
City:
State, Zip:
Country:
Telephone Number(s):

 Please leave my name off the published  
 membership list ☐

Computer(s) used: _____
Disk Drives: 3.5" <input type="checkbox"/> 5.25" <input type="checkbox"/> 8" <input type="checkbox"/> HD <input type="checkbox"/>
Disk Format: MW <input type="checkbox"/> CDD <input type="checkbox"/> Atari ST <input type="checkbox"/>
SS <input type="checkbox"/> DS <input type="checkbox"/> SD <input type="checkbox"/> DD <input type="checkbox"/> HD <input type="checkbox"/>

**ELECTRONIC ADDRESSES:**

CIS \_\_\_\_\_ Delphi \_\_\_\_\_

GEnie \_\_\_\_\_ BIX \_\_\_\_\_

USENET \_\_\_\_\_

 I am willing to volunteer my help in the  
 following area(s):
Special Library Disk Production ☐Documenting Library S/W ☐Reviewing Library S/W ☐

Other \_\_\_\_\_

**INDIVIDUAL MEMBERSHIPS ARE****\$25.00 PER YEAR****CORPORATE- \$150.00 PER YEAR**

Check Number: \_\_\_\_\_

Credit Card Number: \_\_\_\_\_ exp date: \_\_\_\_\_

Is this Master Card? ☐ or Visa? ☐

Signature: \_\_\_\_\_

Mail To: The OS9 Users Group with

**ATTN: MEMBERSHIP**  
 ON ENVELOPE



## Finally

Hazelwood Computer Systems is pleased to announce that our new 68020 UniQuad single board computer is now in production and is available for shipment. Continuing the tradition of our other UniQuad single board computer systems, the UniQuad 20x offers features found on no other single board computer:

- The UniQuad 20x utilizes a 68020 processor with 32 bit data paths.
- A basic UniQuad 20x has 512 Kbytes of 32 bit wide memory along with sockets for 256 Kbytes of ROM; up to 14 Mbytes of additional memory can be added by means of the built in expansion interface.
- For high speed mass storage, the UniQuad 20x has a full SCSI interface complete with DMA data transfer.
- For removable mass storage, the UniQuad 20x supports up to 4 floppy disk drives (either 5 1/4 or 3 1/2 inch) also with DMA data transfer.
- The UniQuad 20x itself has 2 RS-232 serial ports each with baud rate programmable from 50 to 38.4K and equipped with full modem controls. Each serial port utilizes an 8 pin modular "telephone" style connector.
- Also on the UniQuad 20x is a parallel port for printer connection, a battery maintained real time clock/calender, and an interval timer for operating system

"tick" timing.

- For high speed arithmetic computations, the UniQuad 20x includes a socket for the 68881 arithmetic co-processor.
- Measuring 10 1/4 X 12 1/4 inches, the UniQuad 20x is designed to mount in a readily available XT or AT lookalike PC "clone" case.
- Fitted with compatible power connectors, the UniQuad 20x utilizes the readily available power supplies that fit on "clone" cases.
- Equipped with 7 expansion connectors, each "slot" can accommodate additional I/O and memory; an additional "short slot" is reserved for special functions.
- The expansion board initially available, contains 2 Mbytes of memory and 4 serial ports. Thus a system can be fully expanded to 14.5 Mbytes of memory and 30 serial ports.

Additional new products from Hazelwood Computer Systems:

- A 512 X 256 Video Graphics controller for the UniQuad 2. This controller offers either 16 levels of gray scale monochrome or RGBI color. The controller contains 4 independent screens, any one of which can be selected for display at any time. Allowing screen updating at a rate limited only by processor speed, the controller imposes no performance penalty

due to video refresh interference. Also included on the controller board is an interface for a PC compatible serial keyboard. The controller is physically the same size as the UniQuad 2 and attaches via its expansion connector.

- A PROM Programmer for UniQuad 2. This programmer is capable of reading and programming EPROMs of the JEDEC standard family of 27xx type from 2716 to the 27512. Featuring an integral DC-DC converter to generate the necessary programming voltages, all setup information is under program control thus eliminating the need for external "personality" modules or jumpers. The programmer is 4.95" X 6.45" and includes a ZIF socket for the PROM being programmed.

- A small (2" X 2") battery clock/calendar module for both UniQuad 1 and UniQuad 2. This module interfaces via a parallel port and can be used to automatically set the date and time on system boot-up.

Hazelwood Computer Systems has moved recently to a new location in the heart of the Missouri wine country. Please note our new address and telephone number:

## HAZELWOOD COMPUTER SYSTEMS

Hwy 94 at Bluffton, Rhineland, MO 65069

314/236-4372

### PLACING AN AD IN THE MOTD

You too can advertise in the OS-9 Users Group Newsletter! The newsletter will be printed periodically in either an 8.5" x 11" (letter size) format, or a 11" x 14.5" (tabloid size) format. The price for ads is the same regardless of which format the newsletter is published in, with the exception that two color ads will only be available in the issues published in the larger format. Contact a UG officer before publication deadline for information about which format the next issue will be in.

Send your camera-ready, or electronic ad copy and a check for payment to the OS-9 Users Group so that it is received no later than the 15th of the month prior to publication month.

Advertising rates are as follows (as of December, 1987):

	regular		back cover	
	1-color	2-color	1-color	2-color
full page	\$400	\$500	\$500	\$600
half page	\$225	\$275	\$275	\$325
quarter page	\$125	\$150	\$150	\$175
eighth page	\$ 50	\$ 60	\$62.50	\$75

Ads will be accepted in the following electronic formats: VEF,GIF,MACPAINT,MACDRAW, MS WORD-WORKS, MAC-DRAFT,READY SET GO!, ON ANY OF THE FOLLOWING: 5.25" ALL FORMATS EXCEPT 96TPI, 3.5" COCO-ATARI, 3.5" MAC 400K OR 800K, OR VIA E-MAIL TO THE EDITOR.

Each member is entitled to place reasonable classified ads free.

Special: Pre-Paid Ads submitted electronically, (1 color), before March 15th 1988 will be accepted at a 50% discount!

**MULTI-VUE : PREVIEW**

by Kevin Darling

**"User-friendly graphics interface for OS-9 Level Two pprograms"**

We've all been waiting for Multi-Vue (M-V), but with little idea of what it is or does. Based on a demo, reading through the Development Pak docs, and interviews, here's some information to help prepare you for it.

M-V will come on a disk with modules and programs that you'll use to make a new boot disk with the L-II modules you already own. The manual will explain how to use M-V, and should also come with documentation for using the windowing C library and asm calls that you'll find on the Dev Pak. So to get a full M-V development system going, you'll need OS-9 L-II, the Dev Pak, and M-V. Normal end users won't require the Dev Pak. There are two main parts of the M-V package: The graphics-based shell and utility programs for users.

The WindInt module that replaces GrfInt; with enhanced calls.

**GRAPHICS SHELL**

The graphics shell (GShell) and the default programs that it'll use are what most people will consider as Multi-Vue proper. In fact, when GShell is called up using the provided Multistart program, you see the "Multi-Vue" copyright notice. The GShell screen is the main display. It's used to manipulate files, call up programs by icon, start shells and use provided utility programs. It looks like this:

is opened just to their right that takes up the rest of the non-menu/scroll bar screen area. The name of the drive is in a title bar across this window's top.

Each file or directory is shown as an icon (with filename beneath it) in that smaller window:

**Directory icons look like a file folder.**

Executable files looked like a book to me. Normal files look like a book with a page corner turned down. You can also define your own icons.

If you then click on a file's icon, it'll be highlighted (selected) and is what's operated on by any "Files" pulldown menu choice you can then make. If you click the icon again (or just double-click it), then what happens depends on whether it's a Directory, File or special file (see AIF files below).



If it's a Dir, then the same window has its title changed to show the new path ("/DD/CMDS" for example), and the files within the lower directory are now shown. You can go back up one level by clicking the Close Box on the window's title bar, or go straight to another disk by choosing one of the drive icons again. If there are more files than can be shown at one time, you can click on the up/down arrows in the right scroll bar to move within the dir.



Thus you can click your way down through multiple directory levels, and make your way around a disk, viewing each directory. Combined with the main pulldown menu choices, you can fairly easily move about the directories, and execute, list, delete, copy, or find stats on each file.

Here are the choices in each pulldown menu on GShell:

**Tandy**

Calc Calculator with dec/hex  
Clock Analog clock with alarm  
Calendar Deskmate-like calendar with notes  
Control Control panel for color, monitor, mouse setup

These parms can be saved in the "/DD/SYS/env.file" which is read by M-V when it starts up.

Printer Xmode control panel for /P?  
Port Xmode control panel for serial ports  
Help Calls up help file  
Shell Start new shell in another screen  
Clipboard Not enabled or included.

\* The GCalc, GCal, GClock and Shell programs are run in a different screen. They may be resized to fit with each other, or take up a screen to themselves. Of course, you can start multiple copies and CLEAR key between programs as always.

**Files**

(most are used after selecting a file icon)

**Open** Start a program (overlay asks for parameters).

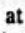
The program runs in an overlay window which is about 1/3 of the whole screen.

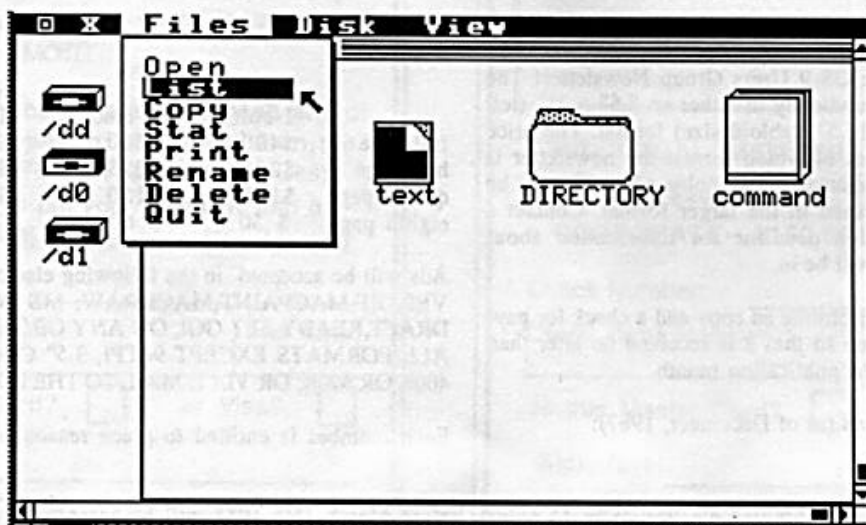
**List** List the file in an overlay pop-up.

**Copy** Copy prompts for destination path.

**Stat** Info on file size etc.

**Print** Print file

The  at the upper left is a tiny box which you click on with the mouse to close an application. The "X" is the Tandy Corporation emblem. It and the other menu bar items across the top (Files, Desk, View) can be clicked on to bring pulldown menu choices. More later on them. The drive icons look like little horizontal drives, and have the device name beneath each one (/DD etc). If you click on one, a large "window"





**Rename** Rename prompts for new name  
**Delete** Delete the file.  
**Quit** Quit M-V. Or can click Close box on menu bar.

## Disk

**Free** Free amount left on current selected drive  
**New Folder** Makdir prompts for new Directory  
**Format** Format prompts for drive  
**Backup** Backup prompts for drives  
**Set Execute** Prompts for new execution path  
**Set Devices** Change/add new drives for left-hand icon show

Full paths to sub-dirs may be substituted.

## View

**Lo Res** 40 column display (icons look normal)  
**Hi Res** 80 column display (icons half-width scale)

## ICONS AND AIF FILES

GShell will recognize directories and executable files. In addition, it checks each directory you've been in for files with the name "aif.xxx", where "xxx" can be any three letters. These are called AIF files, for "Application Information File". They are very similar to the PIF's (Program Info File) used with Microsoft's Windows.

AIF's are short ASCII files with information on what an application requires for GShell. They also provide a means of backwards compatibility for pre-MV programs.

An example "aif.sld" file might be:

Sled	program to run (the sled editor)
parameters	(none here)
ICONS/icon.sled	path to icon file within execution dir
16K	memory modifier
7	screen type
64	minimum screen size
14	

1 background palette  
 0 foreground palette

When looking at a directory using GShell, "aif.sld" would show up using the icon found (normal boot) in "/DD/CMDS/ICONS/icon.sled". The name shown under this icon will be "Sled". Double-clicking this icon will execute "Sled" with no parameters (I can't recall... perhaps it does ask for parms after all).

Any other files with the extension ".sld" will also show up with the same icon (but with their full name: "file.sld" for example). Double-clicking one of these will cause "Sled" to be run with the filename as the parameter. Thus if you use the ".sld" extension for all editor files, they'll all show up with the Sled icon and can be re-edited just by double-clicking the file desired. The same neat technique could be used with spreadsheet files and their program. Or Basic09 source.

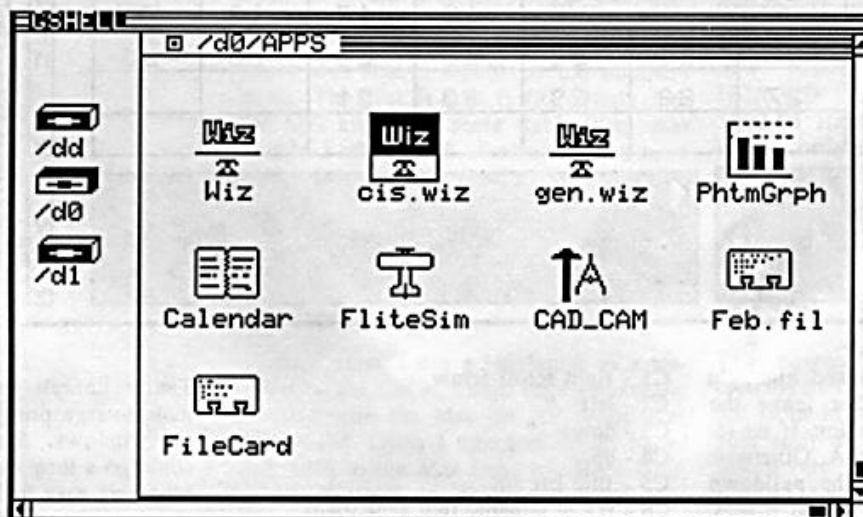
The screen type and minimum size are used to open a new window for you. A box will show up for you to move and expand (unless minimum size is full-screen). You can then use the mouse to select where and how much bigger (if desired) than the default size the new window will

colors; they're thus more colorful, a little larger, and can be more detailed than Mac icons (16x16 black & white?).

We were shown several icons that the guys at Tandy had been playing with, and I have to admit that they had come up with some very nice-looking ones! A parchment scroll for text, a horizon indicator for Flight Sim, a T-square and ruler for CAD, a compass rose for something (I forget) and others. While these aren't included with M-V, Mark said that they'd try to upload them and an icon-editor to CompuServe's OS9 forum when M-V hit the streets to help new owners out.

**WindInt replaces the present GrfInt.** It handles all the same things (checking parameters, calling GrfDrv for screen output), but adds the additional stat calls you see in your L-II manual for setting up special windows and menus.

**SS.WnSet - changes the "look" of a window** as far as borders go. In addition, framed windows are passed a pointer to a packet of information on what the title bar and/or menu bar, and pulldown menus will show. The window types:



**WT.NBOX** No Box. Your usual window type. Full-screen use.  
**WT.PBOX** Plain Box. One pixel border. General purpose.  
**WT.DBOX** Double Box. Double border. Dialog / Alert use  
**WT.SBOX** Shadowed Box. Pulldown menus.  
**WT.FWIN** Framed. Box with title/menu bar at top.  
**WT.FSWIN** Like framed, scroll bars bottom/right.  
 Programs.

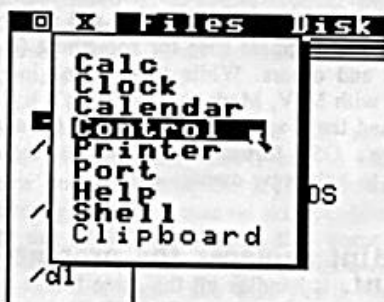
be on a screen. After you set up this window, the program will be started within it.

**The icon file is found using the pathname specified** to a file (with the "e pe" bits set) in your current execution dir. I assume this is so you can keep one set of icons there instead of having them scattered all over your disks. Icons are 24 by 24 pixels in usually 2-4

Windows have three main regions a mouse cursor might be in: Off-window, Content, and Control. The Content region is where the output of a program is going; that is, the inside of the window. Control regions are the menu bar and scroll bars. The Pt.Stat byte in the mouse packet lets you know which. The menu structure passed for a framed window is defined in the Dev-Pak defs. You pass a pointer to the main WN.xxx window descriptor, which has the

window title. This title is seen in place of the menu bar across the top when you have CLEAR keyed away from that window (in other words, when it's not the interactive window).

WN.ITEMS in turn points to a contiguous array of MN.xxx menu descriptors. These make up the top menu bar choices, and you assign a menu id number to each one.



Each of those points to its own array of pulldown items (MI.xxx).

All the MN and MI choices include an enable flag, which determines whether that choice is unavailable (grayed out) to the user. If you wish to use this feature to change enables on the fly, you'll need to copy the arrays from within your program module into the data ram area.

SS.MnSel - When the mouse is clicked on a control region in a framed window with menus, you use this call to let WindInt take over for you. It will show the pulldown menu clicked upon (if any) and highlight the options until you either leave the pulldown or click on a selection. If no selection, returns 0 in register A. Otherwise the menu bar number and the pulldown item number are returned in A and B regs. (MN.ID and MI.xxx #) Some menu bar id numbers are reserved for special menus and areas, including the Tandy menu, scroll bar move arrows, and the close box. See the MID.xxx defs in the Dev Pak.

SS.SBar - You may change the position of scroll bar markers with this call. The X and Y regs should contain the offset in rows and columns.

SS.Mouse - Just wanted to add that this setstt has an additional feature under WindInt. Setting a bit in one of the parameters causes the cursor to automatically follow the mouse!

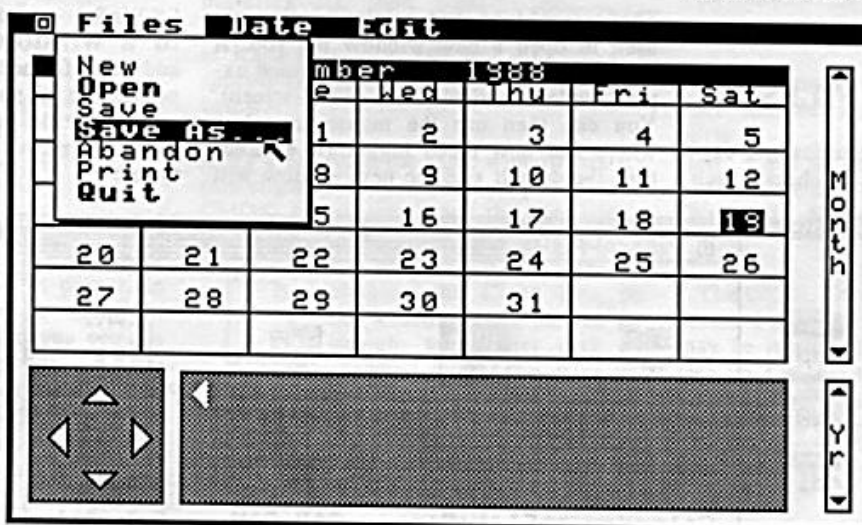
### Any program on a graphics window may use these calls.

For example, you might have a framed window, open an overlay window within it, and redefine the overlay as a double boxed window and print an error message on it. When you close the overlay, it'll go away as usual, border and all.

Some of the window parts used can be seen in your stdfonts file. Try this cmd line in a gfx window:

```
display lb3a c803 c1 c2 c3 c4
c5 c6 c7 c8 c9 ca cb lb3a c801
```

That will switch fonts to the special chars, print them, then switch back to normal font. The chars seem to be:



- C1 - right scroll arrow
- C2 - left "
- C3 - down "
- C4 - up "
- C5 - title bar fill
- C6 - resize window (not supported)
- C7 - close box
- C8 - ?
- C9 - vert scroll marker
- CA - horz scroll marker
- CB - Tandy Corp emblem

### FINAL NOTES

M-V does not "take over" the system. You can always start a program using a

regular shell window. The GShell is just a go-between program designed to make using OS9 easier for some people. Tandy's Mark Siegel points out that when games and applications come with things like "Install" and "Run" files and icons, then a person under M-V can just click the items needed, and bypass using command lines when he/she gets a new commercial program.

On the other hand, experienced users will most likely stick to the normal shell. It'll still be the only way to handle things like pipes and filters, verifying modules, etc. And programs like Dircopy are still quicker to use than the GShell method of: select dir, select file, pulldown and click COPY, type in destination name in overlay. Whew!

In many cases, the WindInt calls will make programs easier to write. The special windows do have several liabilities to me. First, a program using them and the menus assumes the user must have bought the M-V package. The program will need to be in a slower graphics window. In any window with a border, your maximum content size will be about 78 cols by 22 rows. Because the menus only work in gfx windows, we'll still be doing our own on text windows.

If you already have implemented pulldown menus in your programs, then the only (and perhaps good) reason to re-write it using the

Tandy default menus is to make the mouse-usage pretty much the same across all windows. Standardization like this could go a long way towards making OS-9 programs easy to learn.

RSC-19 Tandy catalog #26-3035 \$49.95

-KEVIN DARLING

MOTD



## The SUPERBOARD, a review

by Bill Brady

**With the strange discontinuance of the RS-232 Pak**

by Tandy, interrupt driven serial ports for the CoCo have become limited. There are some out there, but several combine disk controllers, etc, in with the port. LR Tech has designed a package which may be an ideal solution for many OS9 users.

**Basic Data:**

2 rs-232 ports,(expandable to 4 ports with an extension card), a centronics parallel port, a battery backed up clock, and a beeper.

Requires a Multi-Pak Adapter.

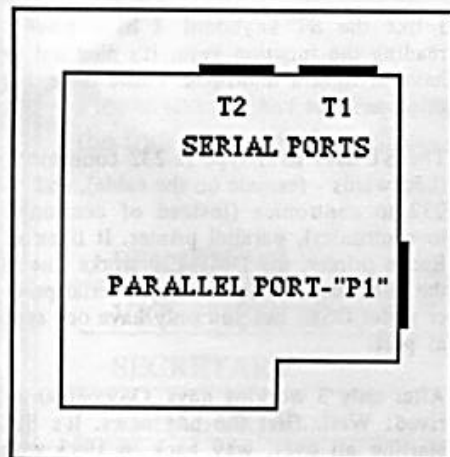
Special drivers are required, and supplied along with source, as with the LR Tech HD systems.

The Board is rather large, and sticks up quite a ways from slot 2 of the MPI.

Connectors are standard all the way around. (db-25, & blue ribbon).

The Clock uses two lithium cells.

The Superboard is marketed, (exclusively), by OWL-Ware.



Lets get the only real negative feature of this board on the table right away: It uses 6850 ACIA's instead of the heretofore de-facto standard S6551. This means that standard drivers like ACIAPAK will not work. Although a replacement ACIA driver is included, the the problem goes deeper. The 6850 has diffrent capabilities than the 6551. This means that applications that

expect certain things from the acia will won't get them. The board is also programmed differently.

The first complaints on this account came from users of Wiz. A special version of Wiz, version 1.1a, was required due to the use of the 6850's.

The thing I like least about the 6850 is that if Carrier Detect is not asserted, the chip won't give the system any data. This means that you must make a trade between using the full capability of your smart modem, and having a process killed if the carrier is dropped. The first is something you do with terminal programs, the second is important for dial-in users. You make this trade by cutting the CD line in the rs-232 cable to the board, (or seting a dip switch on your modem), or not cutting the line. If you have no CD then you can "talk" to you smart modem without going blind during dialing etc. But, when you are in the host mode, if a caller fails to logoff before hanging up, the next caller gets in without a password.

The use of the 6850's, though, is not all negative. The Atari ST uses this same chip, so, in that arena, it is THE standard.

My first reaction at the largeness of the board was that it would be too cumbersome. The fact is that it fits snugly into the MPI and is far more stable than other boards. I often use it as an easel, and have even propped books up on it.

The botton of the card provides a handy place to attach quick reference info such as the switching diagram that this text is wrapped around.

In my system, I use a Macintosh as a terminal to the CoCo. These days I routinely boot-up with the Mac on /T2 running at 9600 baud. Often I xmodem things back-and forth to the Mac from my Hard Disk, all the while I am on-line with GENie, Delphi, or CIS. I have removed the 2nd printer from the CoCo, and now use the Mac and its Imagewriter as a print spooler for the CoCo.

As is to be expected from LR Tech, the quality of this board is very high.

Included in the s/w package, are two utilities for the clock. One is a replacement setime command which is only used to set the clock. (which, by the way, handles daylight savings). The other "stime" is run at boot up from your startup file.

One could easily put together a four user business system using superboards. I also do not hesitate to recommend this board for those wanting added I/O capability in their home system.

The Superboard is available from OWL-WARE, po box 116-D, Mertztown PA 19539. 800-245-6228.

\*\*\*\*\*  
**Other News****And.... Another Serial Board is Available**

While I was writing this review, Jerome Slappy called from Australia with news that he is selling a 4-port board there. This board goes in the MPI and uses 6551's. You can contact Jerome at: 17/40 Gerard St. Cremore 2090, NSW, Australia. Use International Air Mail!

Jerome also reports that the Color Computer 3 is selling quite well "down under", and is beginning to get excellent support from InterTan. He also states that Sculptor is quite widely used.

**FHL** has announced the price of their new "Fastest Hard Drive Interface", the HCA/WD that requires the Digital WD 1002-05 Hard/Floppy interface. They are taking orders NOW at \$119. The WD 1002-05 is \$210. Frank says that he is offering complete "plug-in-and-run" 20 Meg systems for \$799.

**On the "MUST HAVE" List:**

The new **Microware OS-9 Software Sourcebook** is available from MSC. write or phone them for your copy at: Microware Systems Corporation, 1900 N.W. 114th Street Des Moines, IOWA 50322. (515) 224-1929

**Performance Peripherals**

11432 Pena Way, Mira Loma, CA (714) 681-3007 has announced a 512k memory Upgrade, (\$79.95), for the CoCo 3, and a No-Halt floppy controller, (\$99).

**REVIEWERS WANTED**, We have H/W and S/W that needs review. Send the editor your bio, membership number, equipment configuration, and the type of review you are interested in doing. In most cases you can keep the product!

## The OS9 International Users Group....

The OS-9 Users Group is an international non-profit organization of approximately 800 members (and growing) devoted to exchanging and distributing information about, and public domain software for, all available versions of the OS-9 Operating system. The OS-9 Users Group is the only independent group officially recognized by Microware (the developers of OS-9) as an official voice of its users.

The OS-9 Users Group periodically publishes a newsletter entitled "MOTD" which contains many useful articles, software listings, and other information helpful in keeping OS-9 computing enjoyable and rewarding. Other membership benefits include free technical help referrals (by mail or electronic BBS) and significant discounts on the purchase of individual volumes of the OS-9 Users Group Public Domain Software Library. One year memberships in the group cost \$25.00 for individuals and \$150 for companies (corporate membership) and includes a subscription to the MOTD newsletter, one free disk of public domain software (archive set of entire Library for corporate members), and the right to purchase additional disks of software at a very reasonable cost. The group's public domain software library currently has over 56 individual volumes of software comprised of almost 300 individual programs. The library is constantly growing due to the group's policy of sending one volume (disk) from the library free for each individual program donated by a member. (note, although UG software is available from other sources, only MEMBERS receive the latest, and librarian maintained versions).

To join the OS-9 Users Group, fill out the application form reproduced on page 4 (or facsimile thereof) and send to the UG Tampa address.

Visa and Master Card are accepted.

After you join, you will receive a copy of the current issue of the OS-9 Users Group newsletter ("MOTD"), and soon after that, the "starter" diskette, UG Library Volume #0, with software of the type useful in getting you started with both OS9 and the Users Group. Current members who renew their membership will receive a UG "donation credit" post card, which may be redeemed for most UG products and services at any time during your membership.

## Bringin' OSK up on the ST

by Bill Brady

Just before the Princeton Rainbowfest, I decided to stay home and use the money I would spend there to buy an Atari ST. I wanted to get my feet wet in OS9/68000. Here is the story.

First, I had to decide whether to get a 520STfm or a 1040ST. The Megs are out because of price, non-availability, and rumors of s/w incompatibility. I knew that I wanted to use a monochrome monitor, at least initially. Well it turns out that the 520STfm has two outputs that the 1040 does not. One is a color composite output. I was told that any monochrome monitor would work on this port. The 520STfm also has a RF output. I also knew that the 520STfm was upgradable to 1 meg by soldering in 256k chips. (I later did this, but that's another article).

Now, the way Atari sells the 520 is that you get a deal on the b&w Atari monitor, if you buy the 1040 you get a deal on the Color. I wanted mono...money is money, so I bought the 520STfm with no monitor but a promise that I could come back and buy a b&w within a few days for \$75, if the composite output thing didn't work out. I also bought a Magic Sac+, a gadget that lets you run Macintosh s/w on the ST.

Home, I hooked up my spare monochrome monitor to the color composite output. It looked terrible! It was COLOR composite after all. I was still hoping that all would work if I got the box into the monochrome mode. So I started sigging and found a file by Marty Goodman that gave the pinouts & functions of the ST video port. Turns out that to get mono you ground pin 4, so I did. Curses, the thing went into monochrome OK, but it turned off the composite pin! Thus you can get mono, but not mono composite. What? you say. Then how does the Atari B&W work? Well, it's mono alright, but not composite! It uses a v sync, a h sync and a luminance signal. Sorta like analog RGB but is analog L.

So, I needed the B&W monitor. Before heading back to the store, I read the Magic Sac+ docs. Here I found out that I needed a set of old Mac 64k ROMs, but more importantly, I needed a 1 meg ST to run any of the software I had wanted the gadget for in the first place! So, while getting the B&W monitor, bought a board type upgrade to go to 1 meg.

Home again, the monitor worked fine, not much software lets you use the 400 line resolution. But the box is very sharp anyway. (OSK s/w will fix this, sooner or later, and you will have a choice of resolutions). But, the 1 meg board just wouldn't fit in the computer. There were things in the way. Back to the store... different guy... "of course that won't fit, it's for a 520ST and you have a 530STfm! you need a different board!". (which is not available). Well, the 520 only has an 80-T (360k) ss drive. So I traded the board in for an external 80-T (720k) external drive.

Now I was up and running with the B&W monitor, and the external drive, waiting for OSK to arrive from MW. So I played with GEM. It turns out that I could have been looking at Multi-View on the CoCo, they are that similar. To bide my time, I unplugged the Magnavox 85cm515 from the CoCo and hooked it to the ST with a bunch of wires. (no cable). Guess what, worked fine! Maybe just a tad less pretty than the Atari monitor, but sharp, centered, stable, just fine. I caught Marty in Conference and told him. He had assumed it wouldn't work because, among other things, the CM-8 won't work on the ST. Well the Magnavox is one fine box folks.. you can also use it with an Apple or an IBM PC.

I like the ST keyboard. I have trouble reading the function keys. It's nice not to have to fight a multi-pak. I hate mice, but this one's not bad.

The ST uses IBM type rs-232 connectors, (backwards - female on the cable), and rs-232 to centronics (instead of centronics to centronics), parallel printer. It likes an Epson printer, my DMP-130 works fine in the IBM mode. You can use a serial printer under OSK, but you only have one serial port.

After only 3 working days, OS9/68000 arrived! Well...first the bad news. It's like starting all over, way back in 1983 with the CoCo and OS9 level 1. Actually a little worse. Initially we have 5 scf get-stat calls on the CoCo, now we have 17. With the ST, we are starting with just 3.

First, I needed a way to transfer files from the CoCo to the ST. So I called up J&M and ordered one of their new 3.5" "internal" drives. With some adjustment of the cabling, it replaced one of my 5" drives quite nicely. I dmoded the /dl de-



scriptor and formatted an 80-T disk... the ST wouldn't read it. OSK on the ST uses 16 sectors per track vice 18. It uses an interleave of 2 vice 3. New dmode, new format, but the ST still didn't like the disk. So I called Kevin Darling: the ST starts the root directory at track 0 instead of track 1. Kevin whips a patch off the top of his head:

```
-t p
dmode /dl sct=10 tos=10 ilv=2
modpatch
l cc3disk
c 205 5c 12
v
```

Now I can transfer files between the CoCo and the ST. Only a minor annoyance in having to set attributes.

Problems: the personal pak is shy of some things you need badly. There is no exbin or binex. No way to do patches. No assembler, of course, but there is Basic. (Basic00?).

The Documentation is well.. poor. They describe things that aren't there, like MAKE, a program? that is supposed to allow you to make new device descriptors. (they promise that you can use this to make caching floppys, promises promises). I couldn't understand most of

the command write-ups. If I hadn't already been using OS9, I'd have been lost, and would have been anyway, except for the examples. (thank goodness for examples).

The Midi port is not supported, and only the Atari hard disk works out of the box. (no, the supra don't, but get the new Atari SHD205 anyway, because it has the expansion port on it.)

So I started to work. I knew that anybody else in this boat would want to get hold of some OSK s/w. That means going online. So, how do you get there if you only have the personal pak? Kevin had warned me... we needed to bootstrap users into COM. There are many inexpensive term programs available under GEM. I bought ST-Talk for \$16. It will allow downloading, even xmodem, but there is no way to get files from GEM to OSK. (no cross-copy). So I wrote BT.B00. BT is so small that a user can type it in and be up siggin in a few minutes. It only up and downloads text, but will allow a user to download text files.

Now for the good news! It's fast! Running from floppies is about as fast as running from hard disk on a CoCo. Basic00 screams.

You don't NEED many of our level 2 utilities. The shell is so much more powerful! Wildcards! You can copy a whole directory with the copy command.

Tmode and Xmode are much easier to use. (xmode /t1 baud=300). There is also an xmode normal. Nice.

Dynastar came right up on the ST, with the addition of a termset file.

Should you get an ST to run OSK? Probably not, some time is needed to "get things together", add support for the MIDI port, and a graphics interface. (Windows are due the first quarter of 1988). The possible exception to this is if you want to develop applications in Sculptor, or run one of the many high level packages as found in the MSC sourcebook. But, if you are one of those who want to dig in to OS9, want challenge, exposure to a high level operating system, then welcome aboard. You can always run OSK in one of the windows on your CoCo!

-BILL BRADY



## Ballot

Please indicate your choice for the indicated UG offices by entering a checkmark adjacent to each of the four offices below. If you wish to write in a persons name, please do so in the space provided.

PRESIDENT	Dave Kaleita	OR
VICE PRESIDENT	Pete Lyall	OR
SECRETARY	Kevin Darling	OR
TREASURER	George Dorner	OR

This ballot must be returned to the OS-9 Users Group contained within an envelope with the following marked on its exterior: ATTN BALLOT, and your membership number from the label attached to this newsletter. You do not need to identify yourself on the ballot itself. This is as close to a secret ballot as we can achieve by mail.

## Official OS-9 Tee Shirt Now Available!

Announcing the availability of the official OS-9 Users Group Tee Shirt! The cotton-polyester short sleeve shirt is imprinted with a very high quality "full front" four color silk-screened image that has to be seen to be believed (attendees of the April, 1987 RainbowFest in Chicago, know what we mean)! The shirts are available to members for \$15.00 (U.S.) each alone, or \$10.00 (U.S.) if accompanied by payment of OS-9 Users Group membership or renewal dues. The price per shirt is also \$10.00 (U.S.) if three or more shirts are ordered at one time. Postage to anywhere in the U.S. and Canada is included in the price. Make sure you carefully specify sizes (adult S, M, L, XL) of all shirts ordered. Please allow 6 to 8 weeks for delivery.

**Bonus:** you may also redeem two OS-9 Users Group "donation credit" post cards for one shirt.

## cc3io PATCH

CC3IO has problems with multi-byte escape sequences. Kevin Darlings (mod-patch) fix:

```
l cc3io
c 778 a7 12
c 779 c8 12
c 77a 1f 12
c 79f 4b 4e
c 9ee a7 12
c 9ef c8 12
c 9f0 1f 12
c a2d bd c0
v
```

Put this in a file called cc3iopatch, then, to install:

```
OS9:MODPATCH <CC3IOPATCH
```

You can put this in your startup file or make a new boot with the patched cc3io. The choice is yours.

**MOTD** is published monthly, or at other intervals as required, by the National OS9 Users Group Suite R-237, 1715 East Fowler Ave. Tampa FL 33612.

Editor: Wm L. Brady, 1503-I Flanders Lane, Harwood MD, 20776  
301-952-1761.

Make checks payable to: "The OS9 Users Group".

President..... David L. Kaleita  
Vice-President..... Pete Lyall  
Secretary ..... Kevin Darling  
Treasurer..... Steve Odneal  
Librarian..... Carl Kreider

Distribution is Free to members of the OS9 Users Group. Non-Members may subscribe by sending a letter ATTN Membership, at the address above, and by paying a \$20.00 annual fee.

The OS9 National Users Group is not affiliated with any other organization.

## THE NEWSLETTER OF THE NATIONAL OS9 USERS GROUP JANUARY 1988



BULK RATE  
U.S. POSTAGE  
**PAID**  
P.J. GREEN ADV.

P.J. GREEN ADV.  
PO BOX 4026  
UTICA, NY 13504

88/02/13